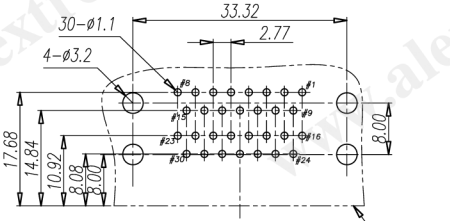
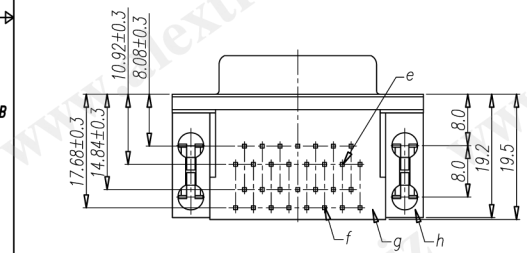
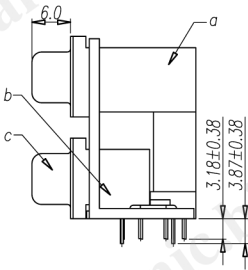
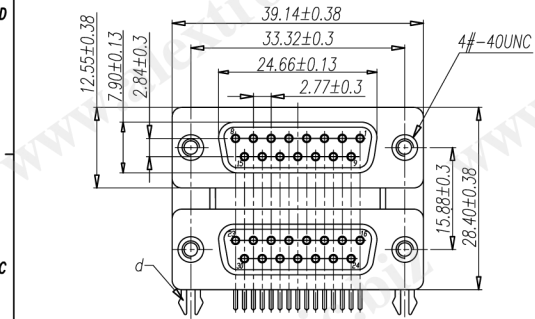


CATEGORY	DESCRIPTION	P/N #
CONNECTOR	D-SUB CONNECTOR FEMALE(15P+15P), DUAL PORT	DB1F1F-B1XX0-0001

REV.	ECN NO	DESCRIPTION	REVISED	DATE
A01		New Release	GMC	2009.11.28



Recommend PCB Layout
(Jack Top View)
Tolerance:±0.05mm
Recommend PCB Thickness: 1.6mm

- SPECIFICATIONS
- CONTACT CURRENT RATING:3 Amperes.
 - DIELECTRIC WITHSTANDING VOLTAGE:AC 1000/60sec.r.m.s.
 - INSULATION RESISTANCE:5000 Medohms MIN.AT DC 500V.
 - CONTACT RESISTANCE:25 Milliohms MAX.
 - TEMPERATURE:-55°C TO +105°C.
 - GROUNDING SCREW TORQUE:3Kg MIN.
 - SOLDER HEAT RESISTANCE:WAVE SOLDERING 260° 10sec.
 - TO CONFORM TO THE "SONY" DIRECTIVE.
 - GREEN PRODUCT IDENTIFICATION LABEL IN PACKING: **G.P. PASS**

PART NO.:
DB1F1F-B1XX0-0001

See Color Scheme

X	Shell Plating
1	Ni Plating

Table 1

X	Terminal Plating
1	Gold Flash Plating
7	Au 15u" Plating
8	Au 30u" Plating

h	Holder	2	Zn-ALLOY	Ni Plating	
g	Cover	1	PBT UL94V-0	Black	
f	Terminal #16~30	15	Brass	See Table 1	
e	Terminal #1~15	15	Brass	See Table 1	
d	Board Lock	2	Brass	Tin Plating	
c	Shell	2	SPCC	Ni Plating	
b	Housing B	1	PBT UL94V-0	Black	
a	Housing A	1	PBT UL94V-0	Black	
NO.	PART NAME	Q'TY	MATERIAL	PLATING & COLOR	Remark

Product Drawing
ALEXTRONIC

UNLESS OTHERWISE SPECIFIED TOLERANCES	SCALE:1/1	UNIT: mm		DWG.NO:
	SIZE: A4	PAGE:1 OF 1		REV:A01
DECIMALS: X :±0.5 X.X :±0.3 X.XX :±0.2	ANGLES: X :±2° X.X :±1°	APPROVED BY	CHECKED BY	PREPARED BY
		WYX	Pengjie	GMC
CUSTOMER COPY				